

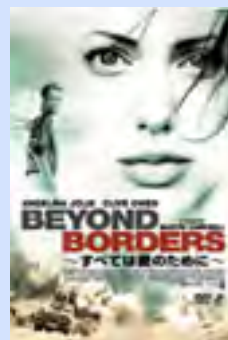
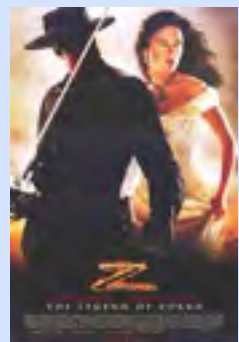
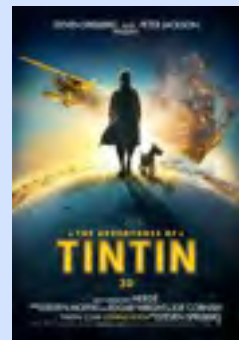
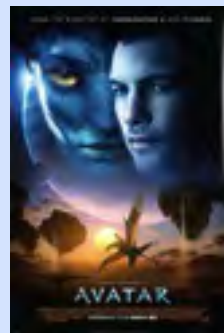
KIM SINCLAIR PRODUCTION DESIGNER

OSCAR WINNER FOR *AVATAR*

BAFTA WINNER FOR *AVATAR*

ART DIRECTION & PRODUCTION DESIGN

(Member Art Directors Guild - Local 800 IATSE)



67 Melanesia Road * Kohimarama * Auckland 1071 * New Zealand

kimsin1@mac.com * vox +64 95 28 74 38

www.kimsinclair.com * cell +64 21 06 58 054

KIM SINCLAIR

PRODUCTION DESIGNER

VFX ART DIRECTOR

DAWN OF THE PLANET OF THE APES

Feature Film

Weta Digital

2014



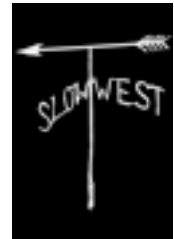
PRODUCTION DESIGNER

SLOW WEST

Feature Film

SeeSaw Films

2013



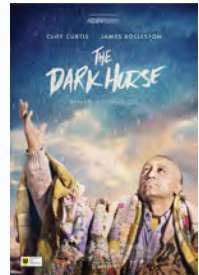
PRODUCTION DESIGNER

THE DARK HORSE

Feature Film

Genesis Films

2013



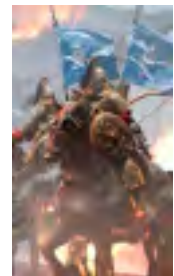
SUPERVISING ART
DIRECTOR

THE GREAT WALL

Feature Film

Legendary Pictures

2012



SUPERVISING ART
DIRECTOR

MAN OF STEEL

Feature Film

Warner Bros.

2011



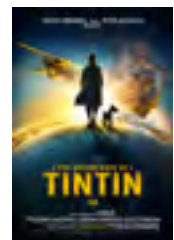
PRODUCTION DESIGNER

TINTIN: THE SECRET OF THE UNICORN

Feature Film

Paramount

2010



KIM SINCLAIR PRODUCTION DESIGNER

PRODUCTION DESIGNER

MARK OF THE LION

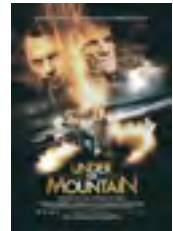
Feature Film
Thick & Thin Productions
2008



PRODUCTION DESIGNER

UNDER THE MOUNTAIN

Feature Film
Redhead Films
2008



LEAD SUPERVISING
ART DIRECTOR

AVATAR

Feature Film
Twentieth Century Fox
2006-8



Oscar and BAFTA winner

PRODUCTION DESIGNER

BLACK SHEEP

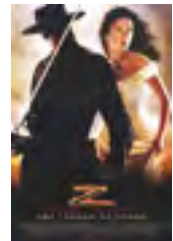
Feature Film
Escapade Pictures
2005



SUPERVISING ART
DIRECTOR

THE LEGEND OF ZORRO

Feature Film
Sony Pictures
2004



ART DIRECTOR

THE LAST SAMURAI

Feature Film
Warner Bros.
2003



KIM SINCLAIR PRODUCTION DESIGNER

SUPERVISING ART
DIRECTOR

BEYOND BORDERS

Feature Film
Mandalay Pictures
2002



PRODUCTION DESIGNER

ATOMIC TWISTER

Feature Film
Once Upon a Time Films
2001



PRODUCTION DESIGNER

HER MAJESTY

Feature Film
Her Majesty Productions
2000

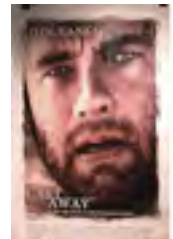


Best Design: NZ Film Awards 2001

ART DIRECTOR

CASTAWAY

Feature Film
DreamWorks SKG
2000
(Part 2)



SUPERVISING ART
DIRECTOR

VERTICAL LIMIT

Feature Film
Sony Pictures
1999-2000



ART DIRECTOR

CASTAWAY

Feature Film
DreamWorks SKG
1999
(Part 1)

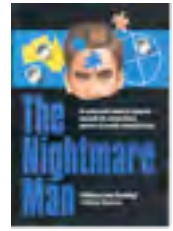


KIM SINCLAIR PRODUCTION DESIGNER

PRODUCTION DESIGNER

THE NIGHTMARE MAN

Feature Film
Telescene
1997



ART DIRECTOR

THE LOST WORLD

Feature Film
Universal/Amblin
1996



PRODUCTION DESIGNER

THE CLIMB

Feature Film
Spellbound Films
1996

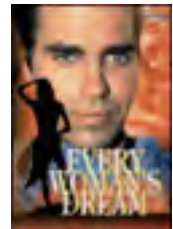


UNICEF Prize: Berlin Film Festival '98

ART DIRECTOR

EVERY WOMAN'S DREAM

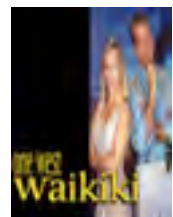
Feature Film
Kushner-Locke Company
1996



PRODUCTION DESIGNER

ONE WEST WAIKIKI

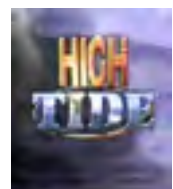
Feature Film
Rysher Entertainment
1995



PRODUCTION DESIGNER

HIGH TIDE

Television Series
Franklin-Waterman Entertainment
1994



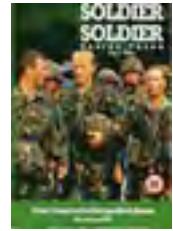
KIM SINCLAIR

PRODUCTION DESIGNER

ART DIRECTOR

SOLDIER SOLDIER

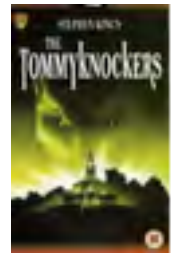
Television Series
Central TV
1994



ART DIRECTOR

THE TOMMYKNOCKERS

Television Series
Konisberg/Sanitsky
1992



PRODUCTION DESIGNER

ALEX

Feature Film
Total Entertainment
1992



PRODUCTION DESIGNER

GRAMPIRE

Feature Film
Moonrise Productions
1991



ART DIRECTOR

THE BOY FROM ANDROMEDA

Television Series
South Pacific Pictures
1990



SET DESIGNER

SPACE KNIGHTS

Television Series
South Pacific Pictures
1988



ART DIRECTOR

WILLOW

Feature Film
LucasFilm UK
1987



ART DIRECTOR

PORTERS

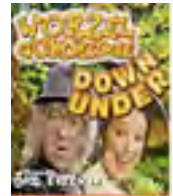
Television Series
Porter Productions
1987



ART DIRECTOR

WORZEL GUMMIDGE DOWNUNDER

Television Series
Graham MacLean Productions
1986



ART DIRECTOR

THE QUIET EARTH

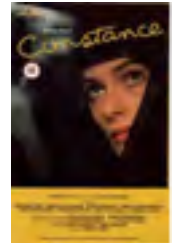
Feature Film
Cinepro
1984



ART DIRECTOR

CONSTANCE

Feature Film
Mirage Films
1983



SET DESIGNER

SAVAGE ISLANDS

Feature Film
Phillips Whitehouse Productions
1982



I was born at Auckland in 1954, and educated at **Auckland Grammar School**.

I have a **Bachelor of Architecture (with Honours)** from the University of Auckland, 1978.

I have been **self-employed** since 1981, working on a wide range of architectural design and building commissions, as well as film work.

I designed and built my own house, during 1989-90. In 1997-98 I **designed and built** a new house for my mother, featured in the magazine URBIS.

Interests include **road cycling**, and mountain-biking.

I have a 20 year old daughter **Electra**, studying Architecture.

I also undertake **location scouting** and consultant **film design** and **budgeting** work.

I have designed and art directed various **T.V.C.s**, including:

SAMSUNG: CHARGE for Somesuch & Co (London) dir. Romain Gavras

MASTERCARD for RadicalMedia (Frankfurt)

McDONALDS for Leo Burnett (Sydney)

COCA-COLA for Kinomontage (Sydney)

TELECOM KOREA for Blue Sky Films (Sydney)

COSTA for Roman Kuhn Filmproduktion (Munich)

K•SWISS for Backyard Productions (Chicago)

COUNTRYWIDE BANK for Yarra Films (Melbourne)

DUAL BAND PHONE for Another Factory (Hong Kong)

KSAssociates Website: www.kimsinclair.com